

LYJ(HL) 黄光样品

1. 测试坐标原点 (虚拟焦点  $x=-0.236\text{mm}$ ,  $y=-0.009\text{mm}$ ,  $z=-0.100\text{mm}$ )

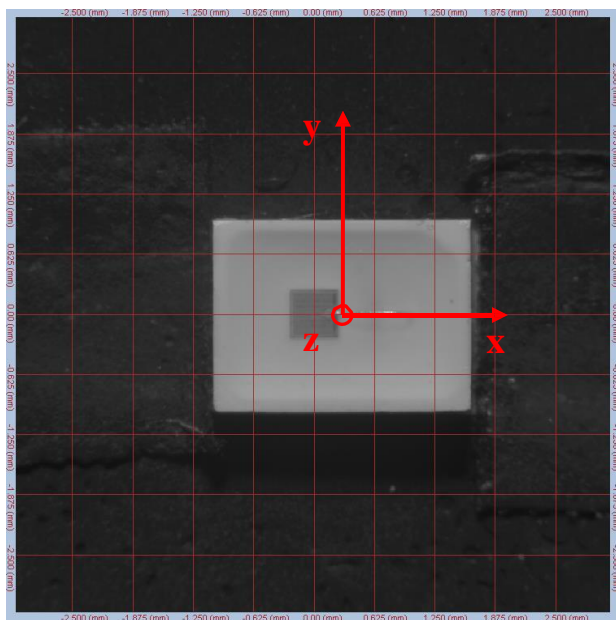


图 1  $I=0^\circ$ ,  $A=0^\circ$

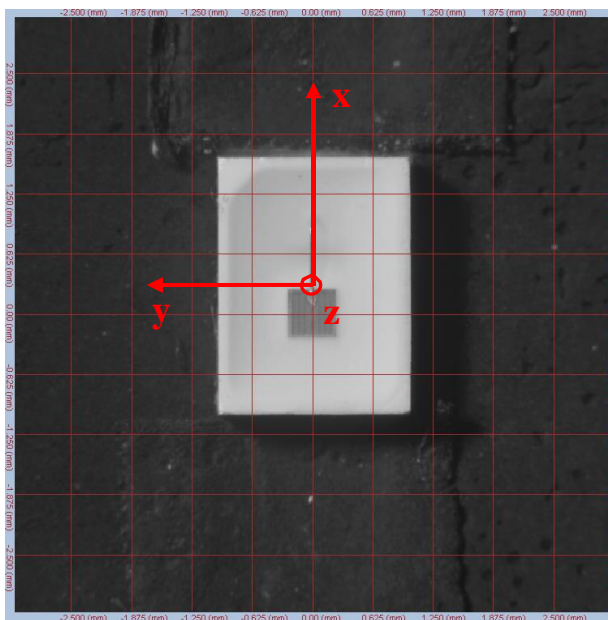


图 2  $I=0^\circ$ ,  $A=90^\circ$

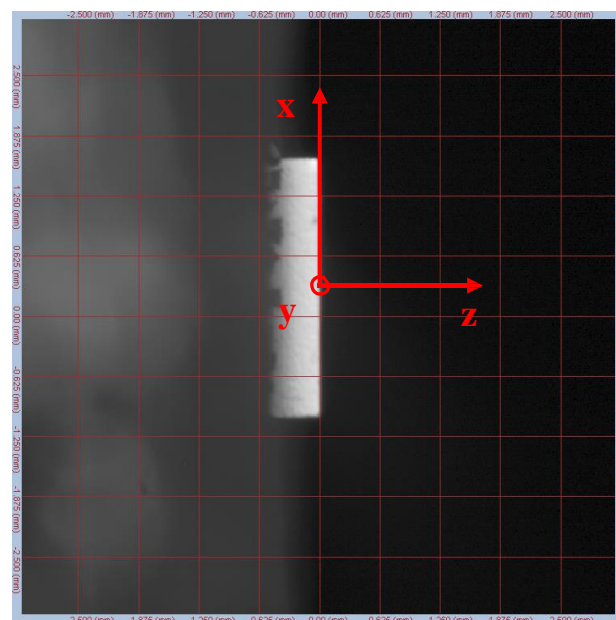


图 3  $I=90^\circ$ ,  $A=90^\circ$

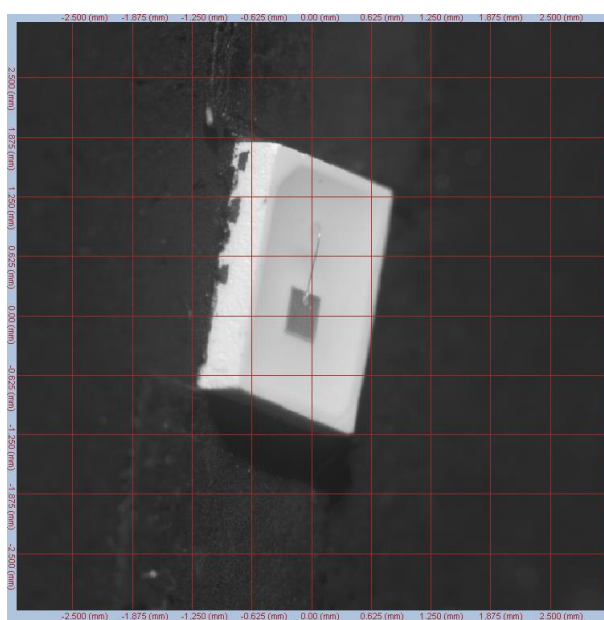


图 4  $I=50^\circ$ ,  $A=75^\circ$