

LAWD(HH) 双色温(冷白) 测试坐标原点 (虚拟焦点 $x = -0.002\text{mm}$, $y = 0.200\text{mm}$, $z = -0.109\text{mm}$)

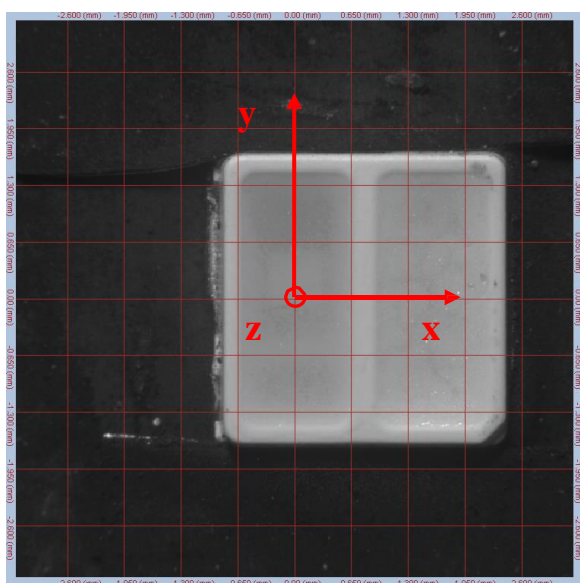


图 1 $I=0^\circ$, $A=0^\circ$

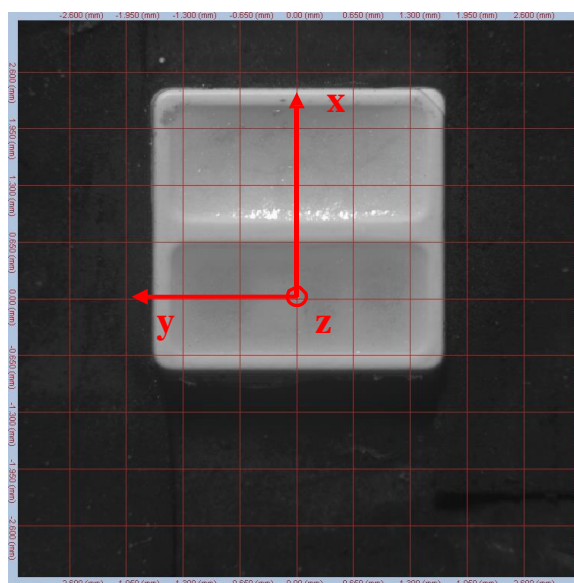


图 2 $I=0^\circ$, $A=90^\circ$

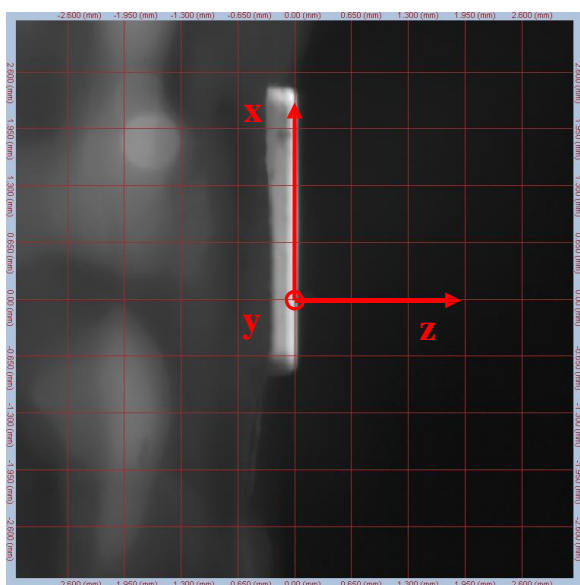


图 3 $I=90^\circ$, $A=90^\circ$

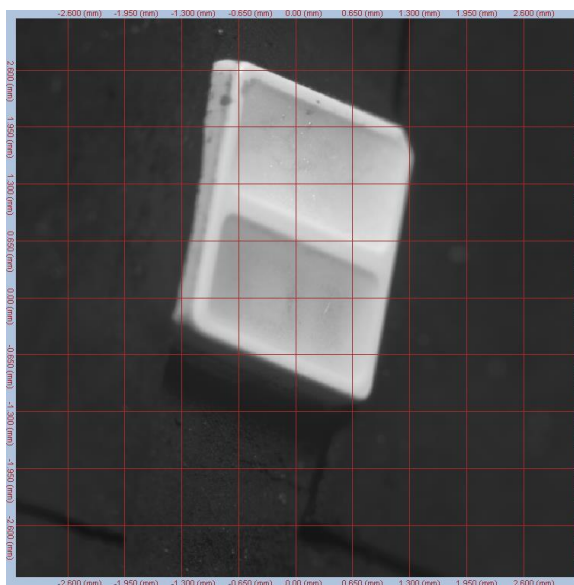


图 4 $I=50^\circ$, $A=75^\circ$

LAWD(HH) 双色温(暖白) 测试坐标原点 (虚拟焦点 $x = -0.006\text{mm}$, $y = -0.293\text{mm}$, $z = -0.143\text{mm}$)

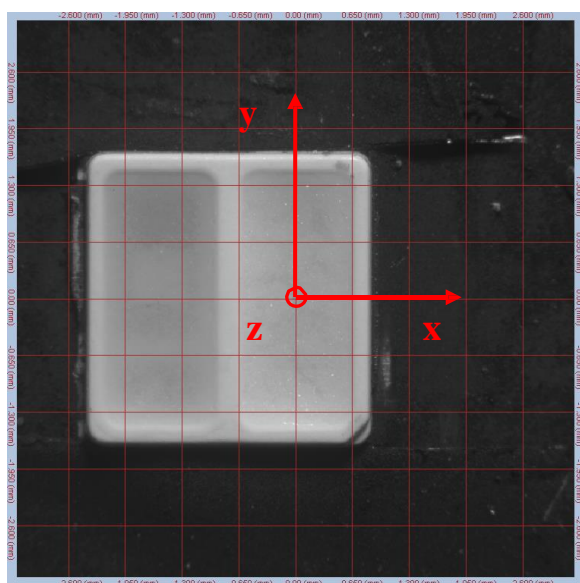


图 5 $I=0^\circ$, $A=0^\circ$

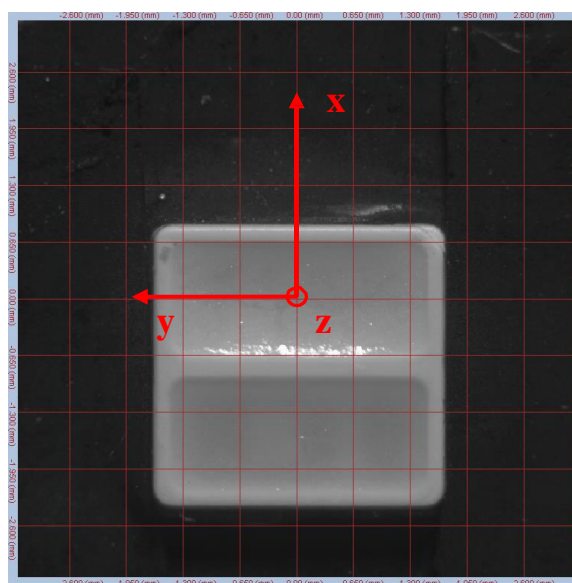


图 6 $I=0^\circ$, $A=90^\circ$

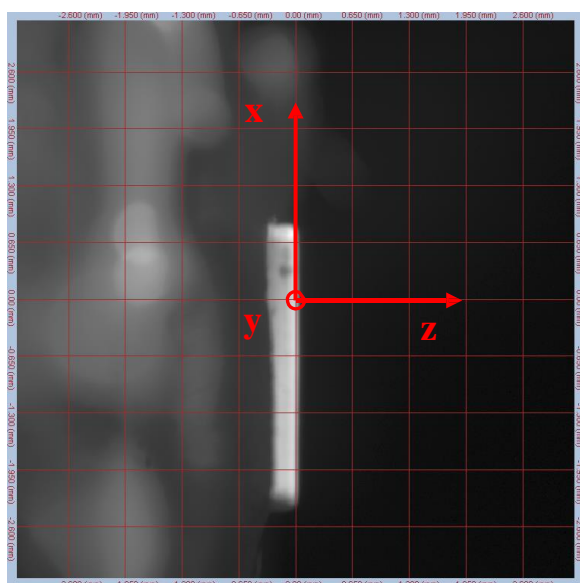


图 7 $I=90^\circ$, $A=90^\circ$

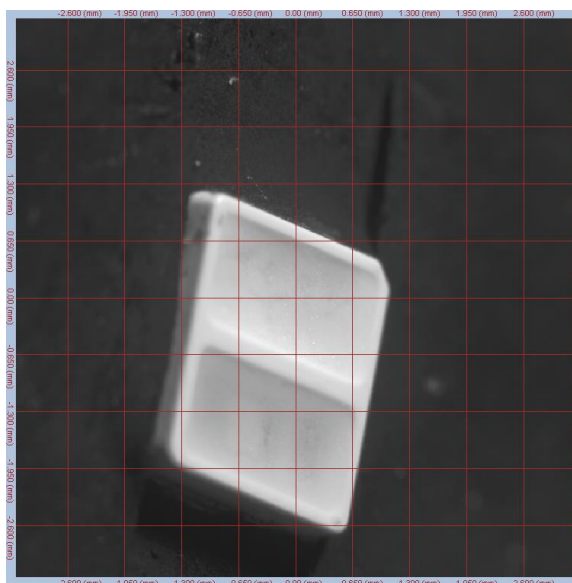


图 8 $I=50^\circ$, $A=75^\circ$